
Tables and Figures for manuscript “The First Ten Years of Highly Active Antiretroviral Therapy: a multi- regional Latin American cohort experience”

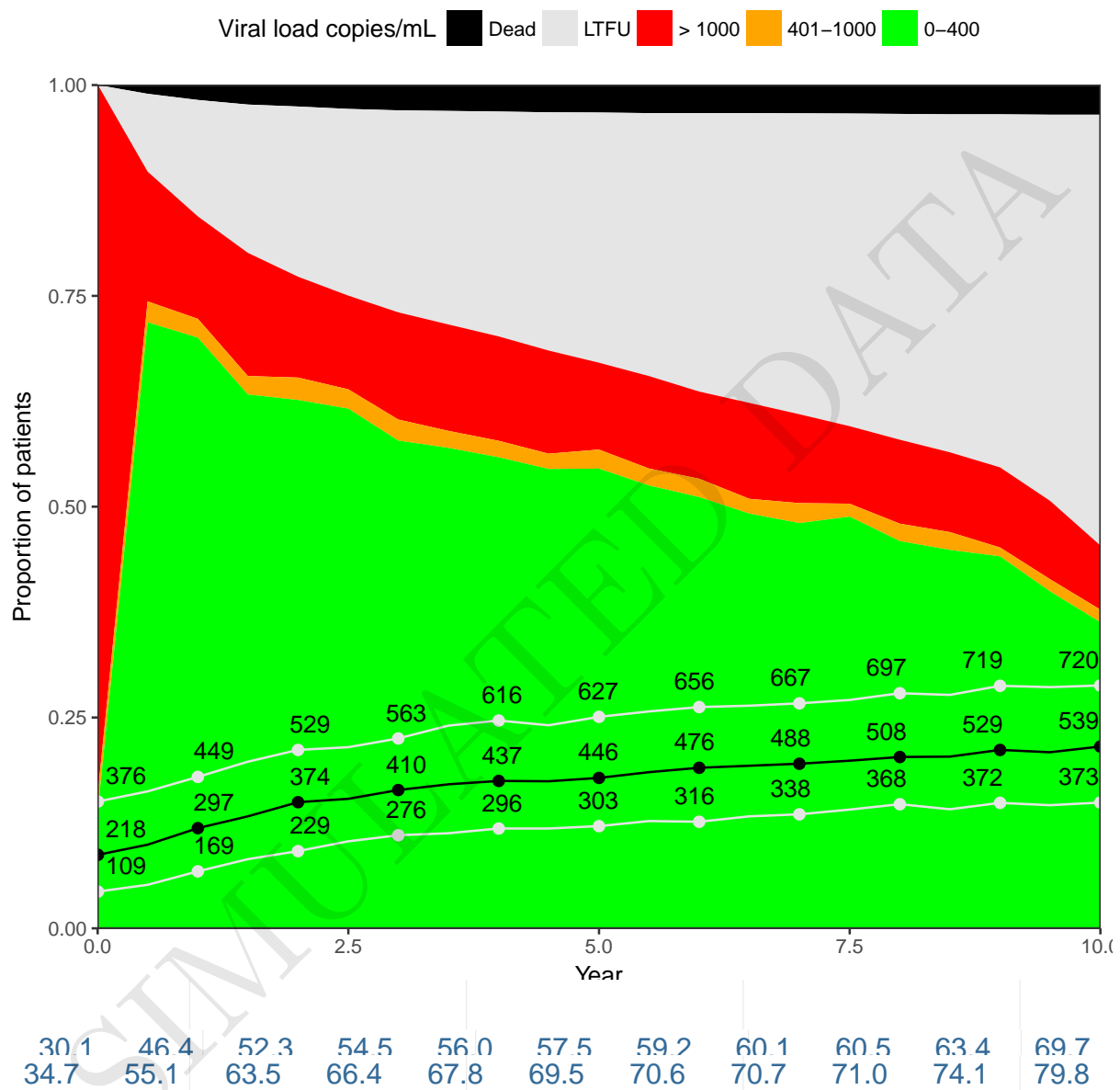
SIMULATED DATA: RESULTS ARE NOT TO BE INTERPRETED SUBSTANTIVELY, BUT ARE PROVIDED TO MAKE OUR STUDY QUASI-REPRODUCIBLE BY ALLOWING OTHERS TO VERIFY THE ANALYSIS CODE USED FOR THE ORIGINAL REPORT ON PUBLICLY AVAILABLE SIMULATED DATA.

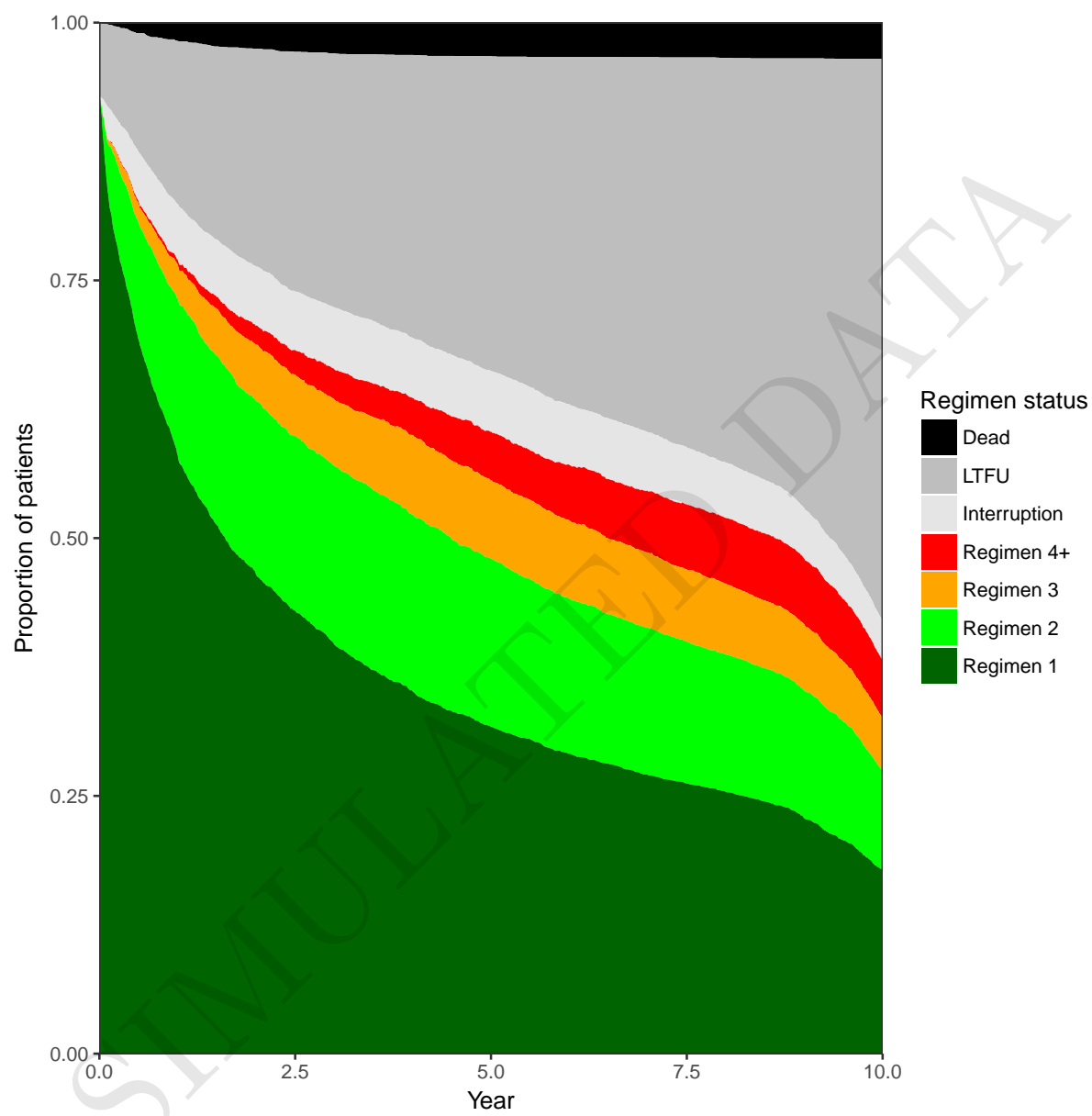
(mock-ccasanet-data-2017-01-19)

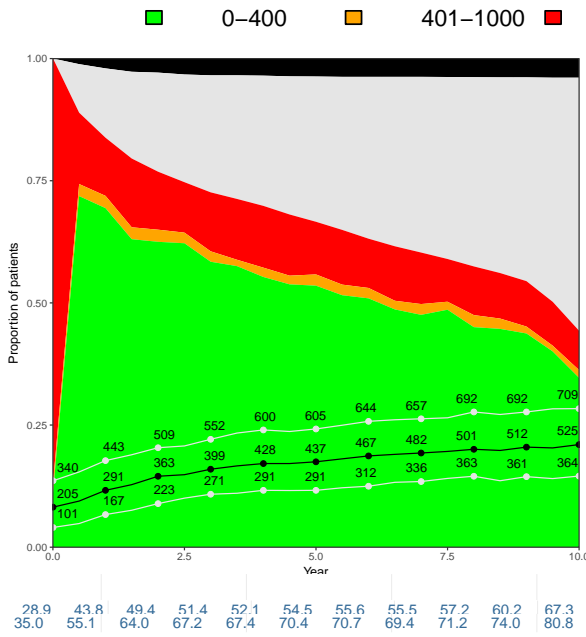
SIMULATED DATA

Table 1: Demographic and physiological characteristics for patients initiating antiretroviral therapy across six Caribbean, Central and South America sites (N=4237).

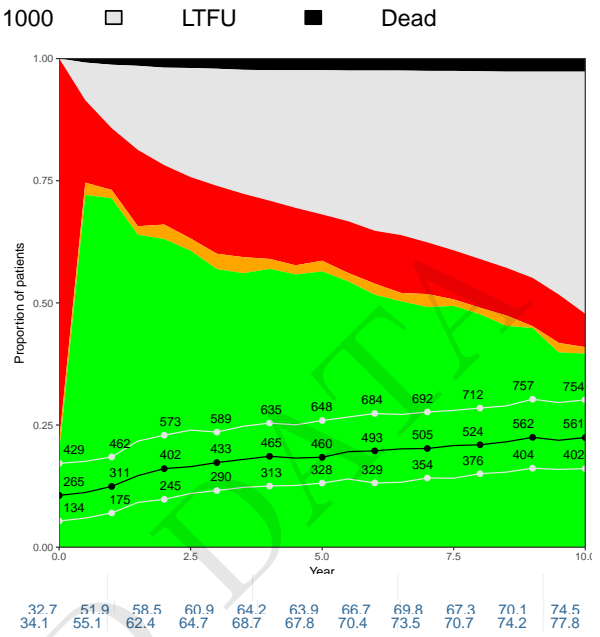
	HF/CMH-Argentina N=1811	INI-Brazil N=885	FA-Chile N=638	GHEKIO-Haiti N=622	IHSS/HE-Honduras N=156	INCMNSZ-Mexico N=125	Overall N=4237
	Value	Value	Value	Value	Value	Value	
Age, years	36 (31 - 42)	37 (30 - 43)	37 (31 - 44)	39 (33 - 45)	35 (30 - 42)	37 (30 - 44)	37 (31 - 43)
Sex							
Female	460(25%)	378(43%)	82(13%)	337(54%)	69(44%)	20(16%)	1346(32%)
Male	1351(75%)	507(57%)	556(87%)	285(46%)	87(56%)	105(84%)	2891(68%)
Route of infection							
Heterosexual	306(17%)	173(20%)	81(13%)	0(0%)	31(20%)	15(12%)	606(14%)
MSM	317(18%)	498(56%)	210(33%)	0(0%)	29(19%)	43(34%)	1097(26%)
IDU	562(31%)	7(1%)	0(0%)	0(0%)	27(17%)	21(17%)	617(15%)
Other	272(15%)	95(11%)	1(0%)	0(0%)	43(28%)	44(35%)	455(11%)
Unknown	354(20%)	112(13%)	14(2%)	622(100%)	26(17%)	2(2%)	1130(27%)
Clinical stage							
AIDS	65(4%)	328(37%)	165(26%)	50(8%)	3(2%)	34(27%)	645(15%)
not AIDS	672(37%)	128(14%)	141(22%)	164(26%)	59(38%)	18(14%)	1182(28%)
Missing	1074(59%)	429(48%)	332(52%)	408(66%)	94(60%)	73(58%)	2410(57%)
Nadir CD4 count, cells/mL	220 (107 - 370)	155 (74 - 284)	120 (45 - 242)	107 (36 - 196)	114 (44 - 231)	74 (23 - 146)	157 (68 - 292)
Missing	1094(60%)	160(18%)	278(44%)	383(62%)	106(68%)	67(54%)	2088(49%)
Baseline CD4 count, cells/mL	242 (126 - 398)	266 (138 - 386)	188 (105 - 356)	152 (50 - 222)	147 (59 - 238)	133 (79 - 216)	214 (109 - 361)
Missing	1293(71%)	438(49%)	408(64%)	428(69%)	114(73%)	86(69%)	2767(65%)
Baseline viral load (log10)	4.5 (3.7 - 5.0)	4.3 (3.3 - 4.9)	4.4 (3.6 - 5.0)	NA (NA - NA)	4.2 (3.6 - 4.9)	4.6 (3.9 - 5.4)	4.4 (3.6 - 5.0)
Baseline viral load (undetectable)							
Yes	56(3%)	90(10%)	23(4%)	0(0%)	3(2%)	4(3%)	176(4%)
No	462(26%)	357(40%)	207(32%)	0(0%)	39(25%)	35(28%)	1100(26%)
Missing	1293(71%)	438(49%)	408(64%)	622(100%)	114(73%)	86(69%)	2961(70%)
Initial regimen							
NNRTI	1092(60%)	458(52%)	489(77%)	586(94%)	144(92%)	97(78%)	2866(68%)
Boosted PI	369(20%)	188(21%)	65(10%)	26(4%)	7(4%)	21(17%)	676(16%)
Unboosted PI	257(14%)	87(10%)	60(9%)	3(0%)	5(3%)	5(4%)	417(10%)
3 NRTI	64(4%)	1(0%)	6(1%)	6(1%)	0(0%)	0(0%)	77(2%)
Other	2(0%)	10(1%)	2(0%)	0(0%)	0(0%)	1(1%)	15(0%)
Initiation Year							
Pre-1996 ¹	(%)	(%)	(%)	(%)	(%)	(%)	(%)
1996	9(0%)	75(8%)	16(3%)	0(0%)	0(0%)	0(0%)	100(2%)
1997	13(1%)	84(9%)	26(4%)	0(0%)	0(0%)	0(0%)	123(3%)
1998	29(2%)	96(11%)	37(6%)	0(0%)	0(0%)	0(0%)	162(4%)
1999	94(5%)	85(10%)	59(9%)	0(0%)	1(1%)	0(0%)	239(6%)
2000	278(15%)	109(12%)	72(11%)	4(1%)	4(3%)	3(2%)	470(11%)
2001	474(26%)	140(16%)	131(21%)	18(3%)	14(9%)	11(9%)	788(19%)
2002	490(27%)	142(16%)	126(20%)	126(20%)	45(29%)	37(30%)	966(23%)
2003	424(23%)	154(17%)	171(27%)	474(76%)	92(59%)	74(59%)	1389(33%)
ART naive							
Yes	899(50%)	602(68%)	562(88%)	551(89%)	151(97%)	124(99%)	2889(68%)
No	542(30%)	283(32%)	76(12%)	70(11%)	0(0%)	1(1%)	972(23%)
Unconfirmed	370(20%)	0(0%)	0(0%)	1(0%)	5(3%)	0(0%)	376(9%)



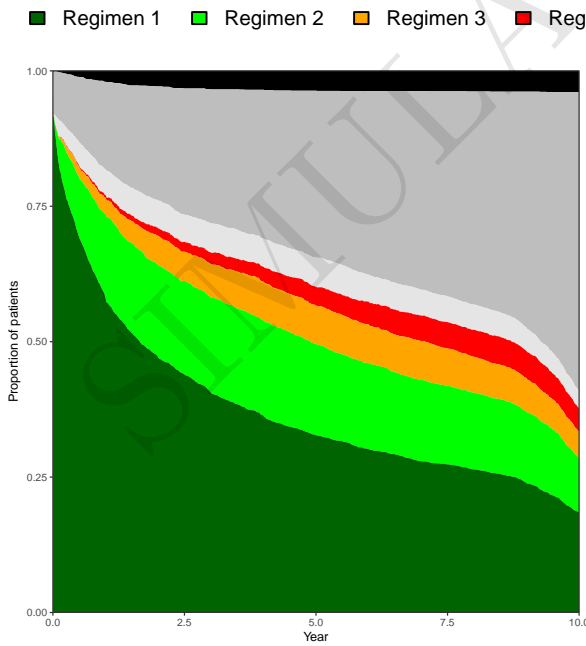




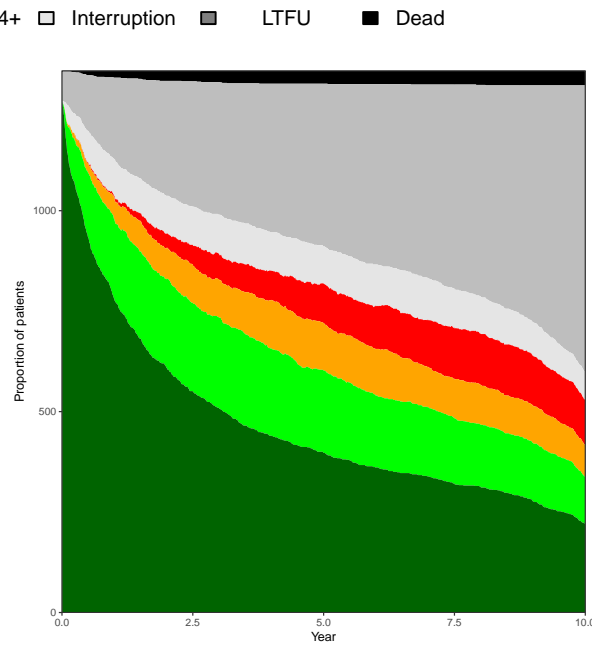
(a) Patient status - Treatment naïve



(b) Patient status - Treatment experienced



(c) Drug regimen status - Treatment naïve



(d) Drug regimen status - Treatment experienced

1 Appendix - R/Package Versions

- R version 3.3.2 (2016-10-31), x86_64-apple-darwin13.4.0
- Base packages: base, datasets, graphics, grDevices, grid, methods, stats, utils
- Other packages: calibrate 1.7.2, ggplot2 2.2.1, knitr 1.15.1, MASS 7.3-45, plyr 1.8.4, reshape2 1.4.2
- Loaded via a namespace (and not attached): assertthat 0.1, codetools 0.2-15, colorspace 1.3-2, digest 0.6.12, evaluate 0.10, gtable 0.2.0, labeling 0.3, lazyeval 0.2.0, magrittr 1.5, munsell 0.4.3, Rcpp 0.12.9, scales 0.4.1, stringi 1.1.2, stringr 1.1.0, tibble 1.2, tools 3.3.2